



**FOR SALE
OR LEASE**

Central City Office Building



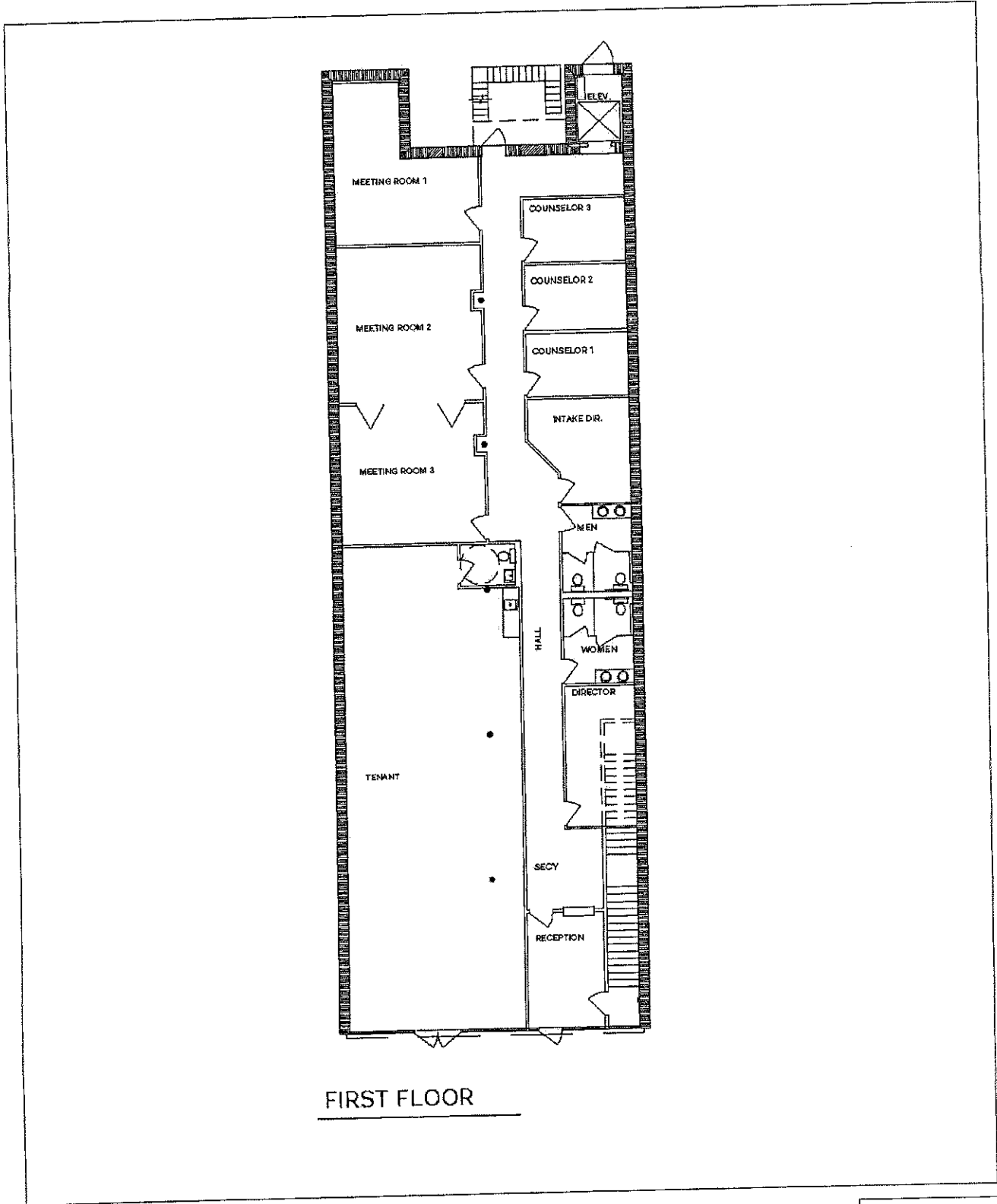
- Address:** 1614 Oretha Castle Haley Blvd.
- Sales Price:** \$750,000
- Rental Rate:** \$11.50 per square foot.
Tenant to pay utilities and janitorial.
- Building Size:** 9,116 square feet
- Space For Rent:** 7,673 square feet
- Parking:** The landlord leases a parking lot and can give tenant up to 25 parking spaces. The parking rent is negotiable.
- Zoning:** C-1, General Commercial District
- Comments:** This building is presently subdivided into two office suites of 1,443 square feet and 7,673 square feet. The large space has an elevator. The suites have separate electric meters.

**For more information, contact:
Bobby Talbot, CCIM
(504) 525-9763
btalbot@talbot-realty.com
www.talbot-realty.com**

The information above has been obtained from sources believed reliable. While we do not doubt its accuracy we have not verified it and make no guarantee, warranty or representation about it. It is your responsibility to independently confirm its accuracy and completeness. Any projections, opinions, assumptions, or estimates used are for example only and do not represent the current or future performance of the property. The value of this transaction to you depends on tax and other factors which should be evaluated by your tax, financial and legal advisors. You and your advisors should conduct a careful, independent investigation of the property to determine to your satisfaction the suitability of the property for your needs. JUNE 2010



EXHIBIT A
FIRST FLOOR PLAN



FIRST FLOOR

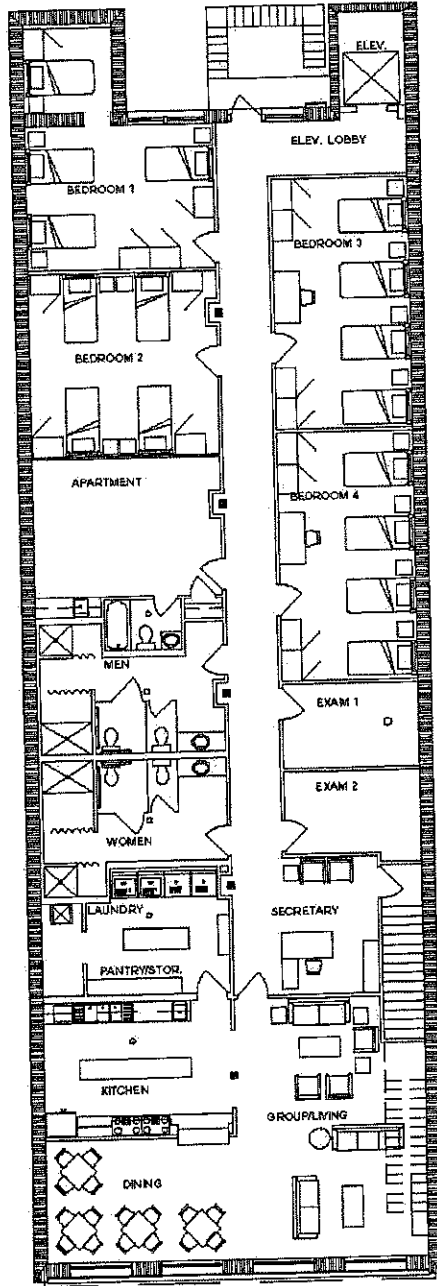


RENOVATION - 1614 O. C. HALEY BLVD.
KALIOPE, LLC
1614 O. C. HALEY BLVD.
NEW ORLEANS, LOUISIANA



EXHIBIT A-1

SECOND FLOOR PLAN



SECOND FLOOR

