



PEACHES RECORDS BUILDING

2001-05 GENTILLY BOULEVARD

PRICE: \$775,000

BUILDING SIZE: 35,530 square feet total

1ST FLOOR: 27,240 square feet of space in which 11,545 square feet is a modern metal-framed warehouse located at the rear of the building

2ND FLOOR: 8,290 square feet of open and private office areas and warehouse space.

LOT SIZE: 30,528 square feet

ZONING: LI, Light Industrial

PARKING: 10 total parking spaces

COMMENTS: This building is centrally located in Gentilly between Paris and St. Bernard Avenues and a couple of blocks from Interstate 610. The building could be used as a office/ warehouse, retail/ warehouse, or a storage facility.

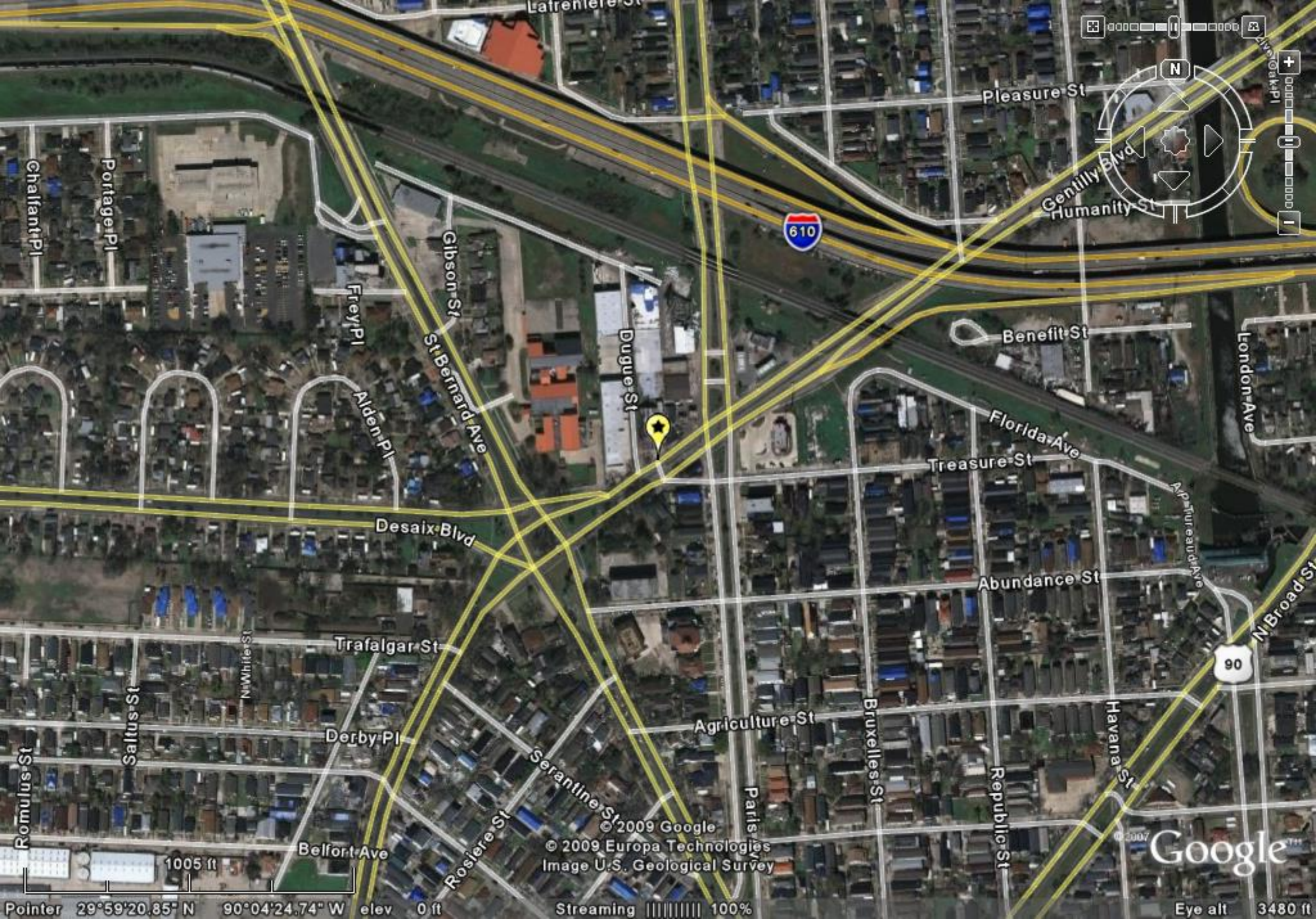
FOR MORE INFORMATION, CONTACT:

BOBBY TALBOT, CCIM

(504) 525-9763

BTALBOT@TALBOT-REALTY.COM

WWW.TALBOT-REALTY.COM



Navigation controls including a compass, a circular directional pad with arrows, and a vertical zoom slider with '+' and '-' buttons.



Chalfant Pl
Portager Pl

Pleasure St

Gentilly Blvd
Humanity St

Gibson St
St Bernard Ave

Dugue St

Benefit St

Frey Pl

Alden Pl

Florida Ave

Desaix Blvd

Treasure St

Abundance St

Trafalgar St

Agriculture St

Derby Pl

Serantiner St

Belfort Ave

Rosiere St

Paris St

Havana St

Romulus St

Saltus St

N Whiter St

Bruxelles St

Republic St

N Broad St

© 2009 Google
© 2009 Europa Technologies
Image U.S. Geological Survey

Google™

1005 ft

Pointer 29°59'20.85" N 90°04'24.74" W elev 0 ft

Streaming ||||| 100%

Eye alt 3480 ft

